

EAGLE

EXTENDED LIFE ELBOWS

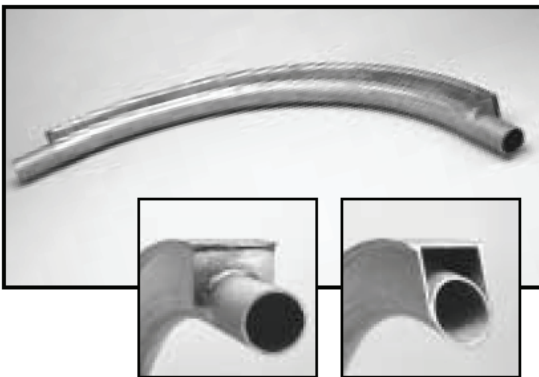
WEAR-BACKED ELBOWS

In highly abrasive applications, Morris offers several designs/ options of wear-resistant extended-life elbows. All are designed for extending the life of your elbow; choice of design should be based upon customer preference and application experience with a given design.

The basic concept is, once the core elbow has worn through, the cavity fills with the abrasive material and wears against itself, therefore, extending the life of the component.

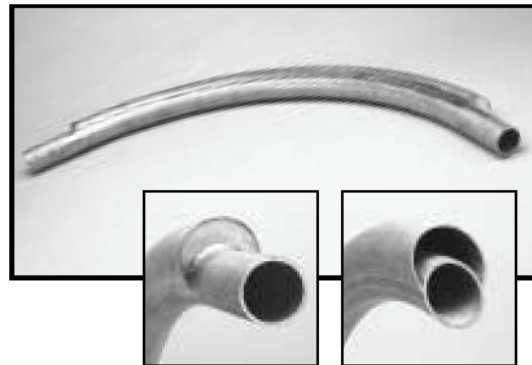
- *Extended wear life*
- *Reduced downtime and loss of material*
- *Reduced maintenance cost*
- *Higher system productivity*
- *Elbows available in various materials*
- *Sizes available to fit your existing system*

WEAR-BACK (FILLED OR UNFILLED)

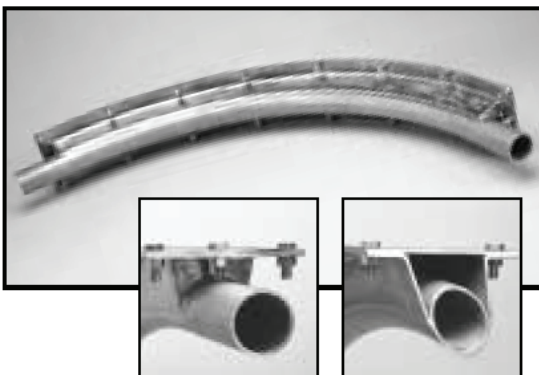


May be supplied with concrete or porcelain filling.

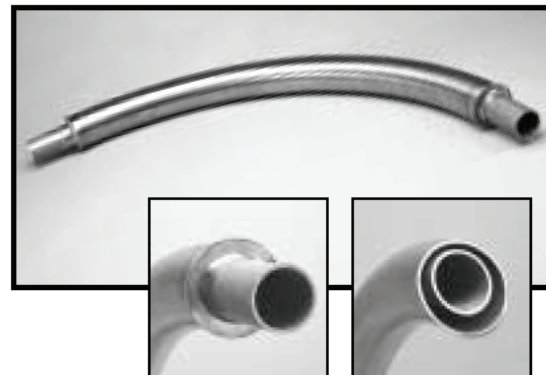
SHELL-BACK



REMOVABLE WEAR-BACK

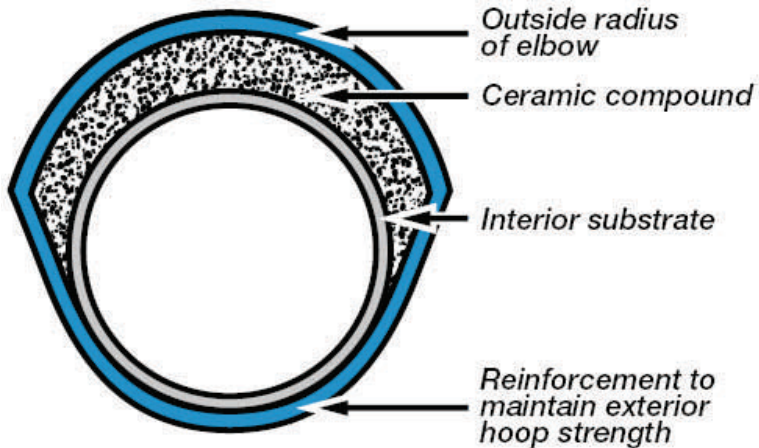
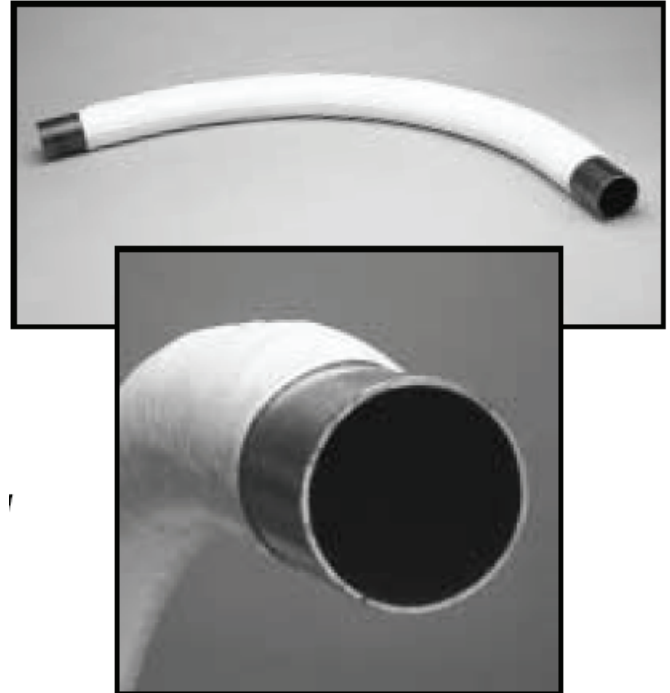


TWIN-BACK



CERAMIC-BACKED ELBOWS

The "CERAM-BACK-ELBOW"[™] has a jacket across the back of the core elbow which is approximately 1/2" of ceramic compound. This compound has a Mohs hardness of 9+, second only to diamond which has a Mohs hardness of 10. The ceramic jacket and core elbow is then wrapped with an exterior material to maintain the hoop strength. Once the ceramic compound has been applied, it receives a finished coat of paint.



CERAMIC-LINED ELBOWS

Ceramic-lined bends have a uniform coating of a specially formulated ceramic material that is added to the inside diameter of the bend to give it a very hard, slippery, glass-like surface. The hardness of the ceramic coating is between 5 and 6 on the Mohs Scale – as hard as glass and just as smooth. The exterior of the bend has the appearance of annealed steel and can be easily painted.



The Eagle Group, Ltd.
8384 W. Peck Road
Greenville, MI 48838

Phone: (616) 754-7777
Fax: (616) 754-1555
E-Mail: sales@eaglegroup ltd.com
Web Page: www.eaglegroup ltd.com