

# ***EAGLE***

## **FLEXIBLE SCREW CONVEYOR**

---

### **FOR POWDERS & OTHER BULK SOLIDS**

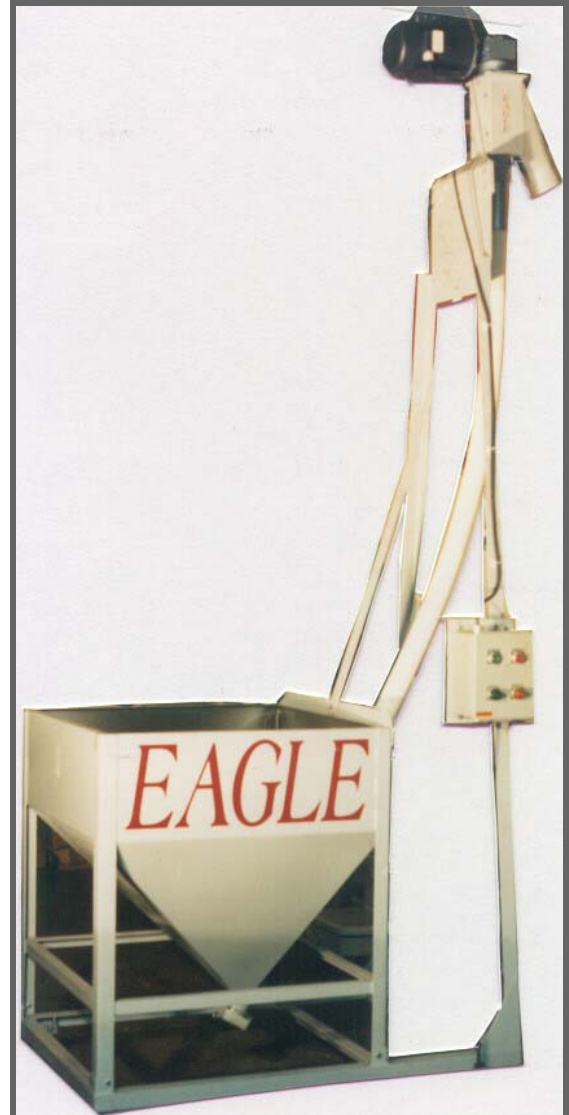
The Eagle “Flex Hopper” conveys powders and bulk solids ranging in sizes from sub-micron to flake or large pellets.

All Eagle Screw Conveyors are manufactured with a spring steel or stainless steel flexible auger inside an outer tube made of either UHMW-PE (Ultra High Molecular Weight Polyethylene) or steel.

Eagle Flex Augers are driven by a 3-phase electric motor or gear motor. The drive is coupled to the screw at the discharge end. The discharge spout directs material into a hopper or other process equipment.

Eagle Flex Power Hoppers are efficient, inexpensive and dependable. Only one moving part makes the conveyors virtually maintenance free.

Chemicals, foods, pharmaceuticals, cosmetics, and plastic resins are ideally suited to be conveyed in Eagle Flexible Screw Conveyors.



Portable “Flex Hopper”

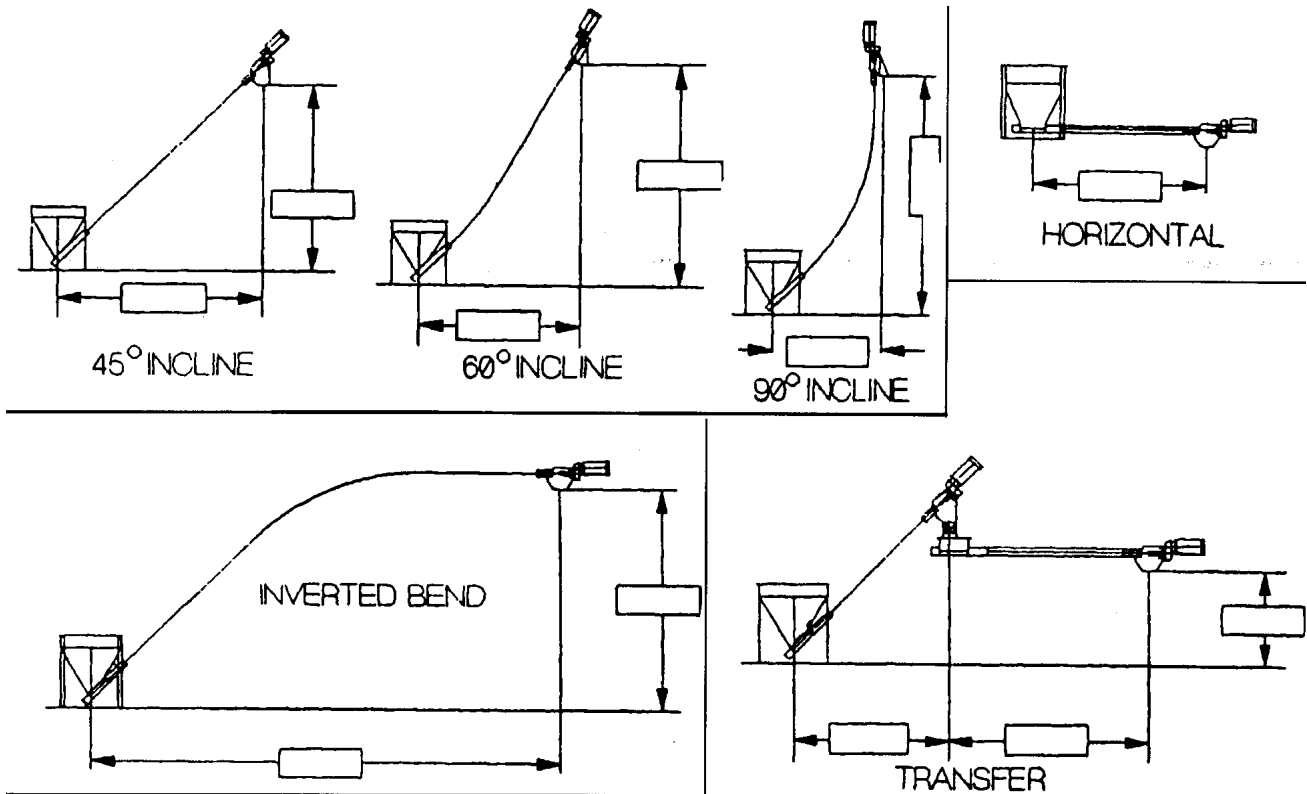
---

**THE EAGLE GROUP LTD.**

# PRODUCT OVERVIEW

MODEL NUMBER	TUBE DIAMETER O.D.	NORMAL HORSEPOWER	CAPACITY CUBIC FT. / HR.
30-3	2-5/8 Inch	1-1/2 hp	35 Maximum
30-4	3-1/2 Inch	3-5 hp	90 Maximum
30-6	6-5/8 Inch	5-10 hp	475 Maximum

- Capacities vary depending on materials conveyed.
- Typical hopper dimensions are 36" x 36" x 36" (8 cubic feet).
- Portable units with auger support frames are equipped with casters and mild steel bolted frames.
- Stainless steel models available.
- Auger and tube lengths up to thirty-five feet are common. For conveying distances that exceed 35 feet, two or more flexible screw conveyors are inter-connected to cover the distance.
- The bulk density of the conveyed material determines the screw conveyor length and horsepower requirements. Eagle will evaluate subject material in its testing facilities prior to recommending screw conveyor system components.



The Eagle Group, Ltd.  
 8384 W. Peck Road  
 Greenville, MI 48838

Phone: (616) 754-7777  
 Fax: (616) 754-1555  
 E-Mail: sales@eaglegroup Ltd.com  
 Web Page: www.eaglegroup Ltd.com